

Elizabeth Park Apartments

Apartments No 1-6



168 Sydenham St Kewdale WA

Nester's Dream or Investors.

Perfect location for city dwellers. Walking distance to Belmont forum shops, cafes, restaurants, offices, public transport and the full works. Living, working, enjoying leisure and social life at the utmost, the location has got them all. This two bedrooms with two bathrooms, dining, lounge and a modern kitchen with engineered stone tops, soft close drawers, front loader washer and trough in laundry cupboard.

Lower: Apt. 1 : 2 Bed, 2 Bath Size: 69 m²

Apt. 2 : 2 Bed, 2 Bath Size: 69 m²

Apt. 3 : 2 Bed, 2 Bath Size: 69 m²

Upper: Apt. 4 : 2 Bed, 2 Bath Size: 69 m²

Apt. 5 : 2 Bed, 2 Bath Size: 69 m²

Apt. 6 : 2 Bed, 2 Bath Size: 69 m²



For more information call: Joe Singh: 0401 055 209 Ying Yap: 0407 779 982

Note: All dimensions are approximate. Description and details are provided in good faith and are believed to be correct. Whilst all care has been taken in the preparation of the information contained herein no guarantee is offered or implied.

Elizabeth Park Apartments

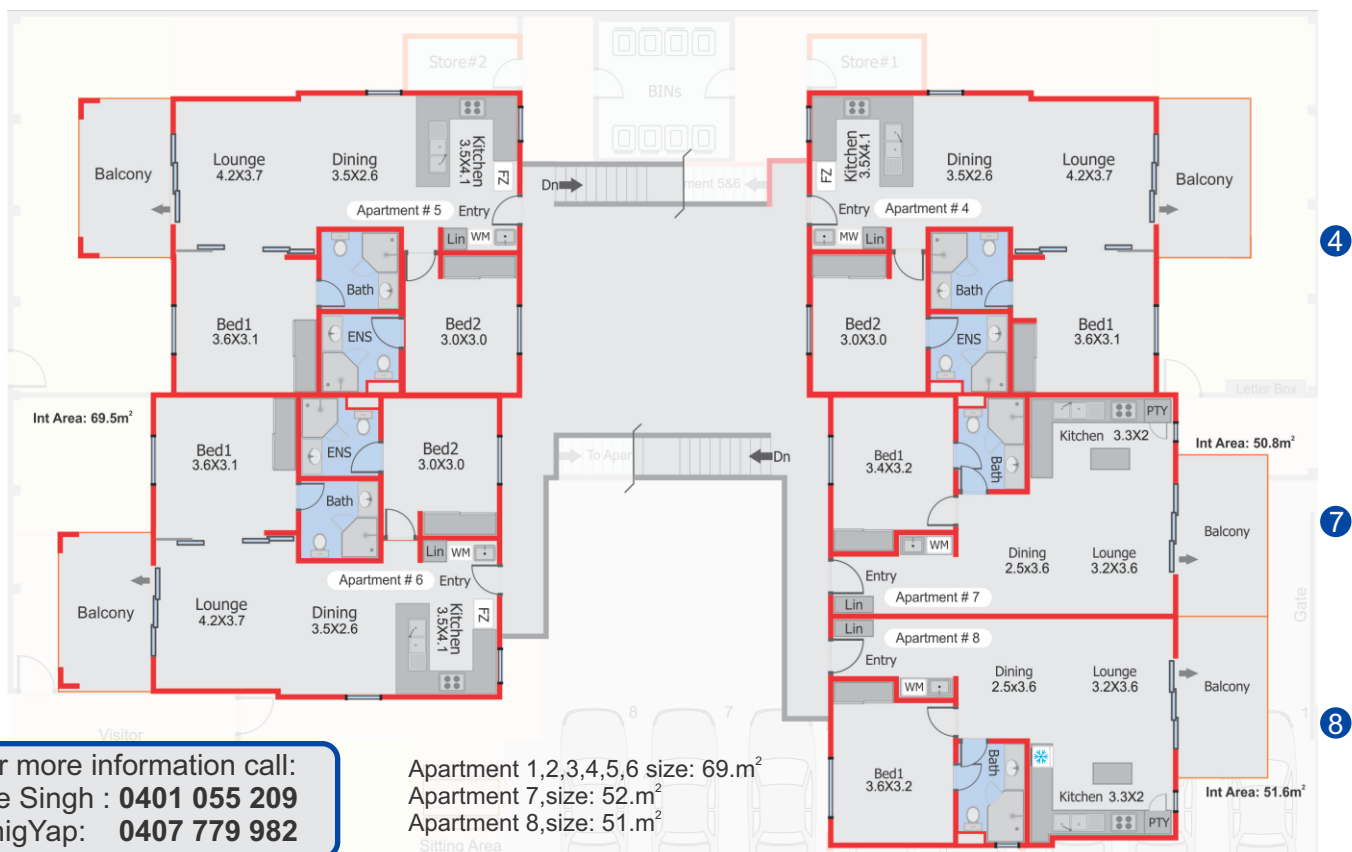
Floor Plan

168 Sydenham St Kewdale WA

Lower Floor



Upper Floor



For more information call:
Joe Singh : 0401 055 209
YinigYap: 0407 779 982

Apartment 1,2,3,4,5,6 size: 69.m²
Apartment 7, size: 52.m²
Apartment 8, size: 51.m²